

AHRI CERTIFIED®
C www.ahridirectory.org

24.41 B.H.P. (239.5 kW)
 Fuel : Natural Gas or Propane
 Inlet Gas Pressure (NG) : 5 PSI Max.
 Inlet Gas Pressure (LP) : 2 PSI Max.
 (NG/LP) : 7" W.C. Min.
 Operating Weight : 1,322 Lbs. (599.6 kg)

120v/1ph/60hz:	7.5 Amps
208v/1ph/60hz:	6.6 Amps
230v/1ph/60hz:	6.4 Amps
208v/3ph/60hz:	6.0 Amps
230v/3ph/60hz:	6.0 Amps
460v/3ph/60hz:	3.0 Amps

Max. 160 PSIG & 250°F

High Temperature Limit	RWF55
Flame Safeguard	Pilot Gas Valve
High/Low Gas Press Switches	Pilot Gas Regulator
Modulating Gas Valve	Pilot/Leak Test Cocks
Operating Control	Combustion Air Switch
Blower Motor, 1-1/2 HP	Press. & Temp. Gauge
Water Flow Switch	Relief Valve
LWCO	VFD

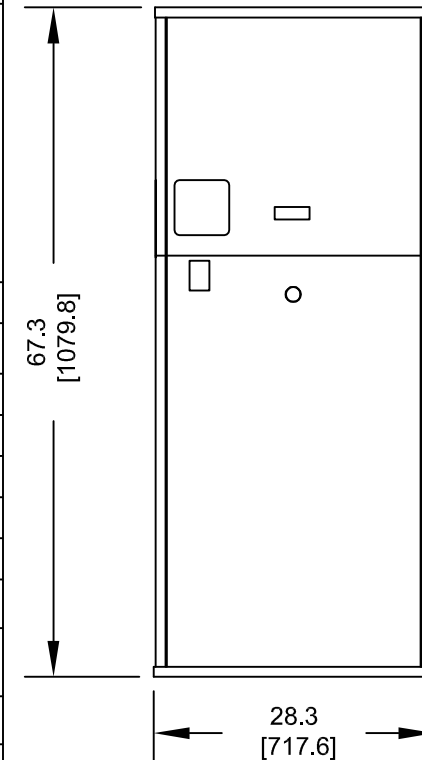
The following components are included in addition to above items when this option is used.

(1) Motorized Gas Valve, (1) Solenoid Gas Valve
N.O. Vent Valve

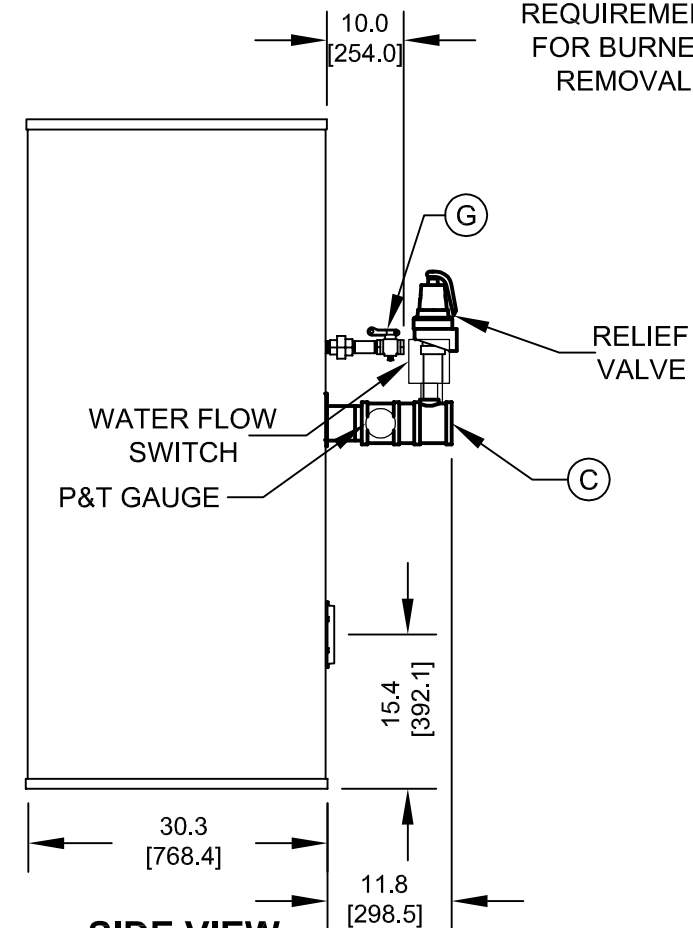
The following components are included in addition to above items when this option is used.

(2) Motorized Gas Valves With Proof Of Closure switches
Flame Safeguard that recognizes proof of closure valves.
N.O. Vent Valve

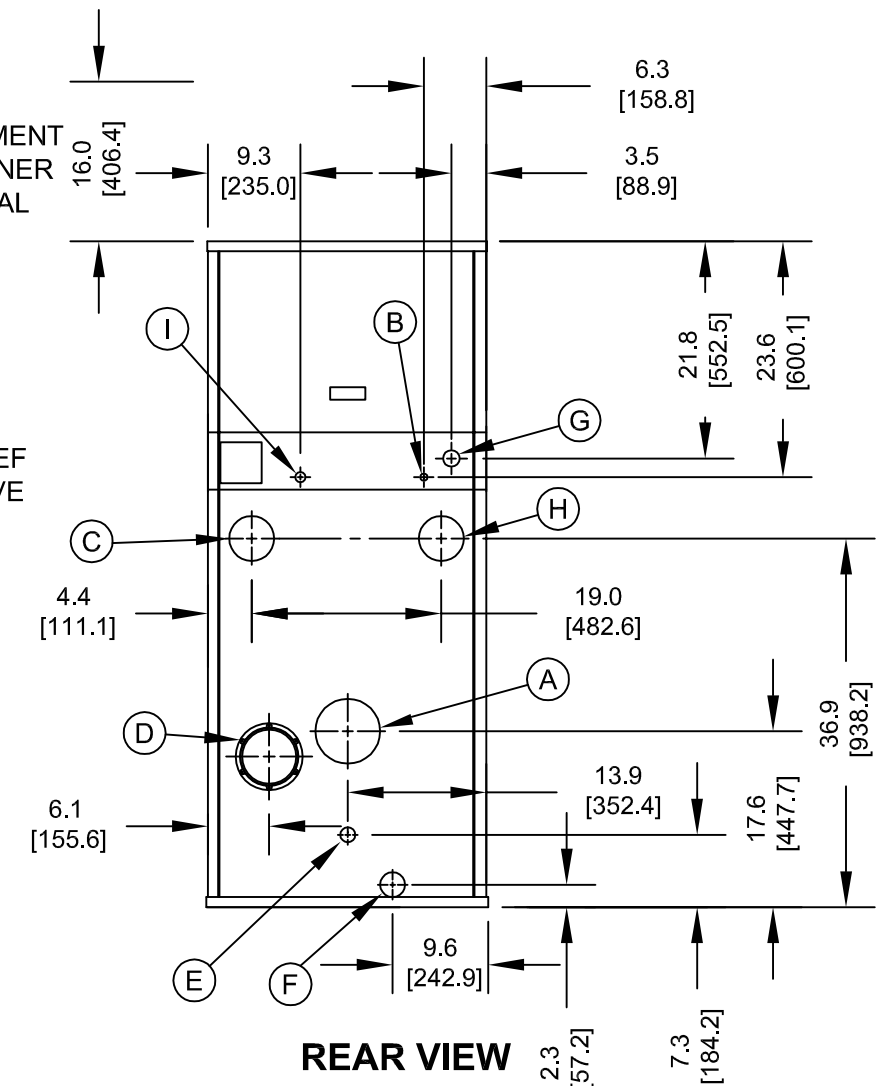
1. SEE O&M FOR REQUIRED INSTALLATION CLEARANCES.
2. DIMENSIONS SHOWN ARE FOR REFERENCE ONLY.
3. DIMENSIONS ENCLOSED IN [] ARE IN MM.



FRONT VIEW



SIDE VIEW



REAR VIEW

CONNECTION	DESCRIPTION
(A)	FLUE OUTLET, 6" [152.4] DIAMETER (AL29-4C SS)
(B)	GAS PILOT, 1/4" [6.4] O.D. TUBE
(C)	WATER SUPPLY TO SYSTEM, 3" NPT
(D)	INLET AIR, 6" [152.4] DIAMETER
(E)	DRAIN, CONDENSATE, 5/8" [15.9] O.D. TUBE
(F)	DRAIN, BOILER, 1" NPT
(G)	GAS SUPPLY, 1 1/2" NPT
(H)	WATER RETURN FROM SYSTEM, 3" NPT
(I)	GAS VENT, 3/4" NPT (D.B.&B. & D.B.&B. w/POC ONLY)

EVO-1000 BOILER


**THERMAL
SOLUTIONS**

www.thermalsolutions.com